

Model JQBW-8

Wall Mount Dust Sensors



DESCRIPTION

The wall-mounted JQBW-8 series dust sensors are low profile, unobtrusive, and designed for installation in any space or conference room. It takes count of the dust number in a liter of air automatically. The transmitter controller includes analog output (0-5V or 4-20mA), a mounting/wiring sub-base, and a Lifetime Calibration Guarantee. All JQBW-8 series sensors offer a SPDT relay (normally open or closed) and can be custom programmed to a specific measurement and output range using the software interface or on-board keypad (display units).

PERFORMANCE SPECIFICATIONS

| | |
|--------------------------|--|
| Supply voltage | 24VDC (18-30V) |
| Power | Normal 42mA, maxim 100mA |
| Range | 0-8.8K/L, or 7.1-9.0 Cleanliness (ISO14644-1 standard) |
| Accuracy (25°C) | ±10% |
| Dust diameter | >1µm >2µm >2.5µm |
| Output | Current: 4 to 20mA (Load < 500Ω) Voltage: 0-5V/10VDC (Load > 1KΩ) Communication: RS-485/RS-232 Relay: 2 (2A/30VDC, 0.4A/125VAC) |
| Response time | <1min (0-90%RH) |
| Long-term stability | Temperature: <0.1°C/year |
| Operating environment | 0-50 °C, 5% RH~95% RH |
| Display dimension | 54mm x 45mm (128x64 dot LCD) |
| Mounting dimension | 180mm x 130mm x53mm (White Color ABS) |

FEATURES

- user setup 3 dust diameter (1µm, 2µm or 2.5µm)
- ±10% accuracy
- 128x64 dot LCD display with blue back
- wall-mounted installation easily
- 4-20mA, 0-5Vdc, RS-232/485 and relay outputs

ORDER CODES

| JQBW-8 | | |
|--------|------------------------------|--|
| I1 | Current 4ma to 20mA | |
| V1 | Voltage three-wire 0 - 5VDC | |
| V2 | Voltage three-wire 0 - 10VDC | |
| W1 | RS-485(max 127 nodes, 1.2km) | |
| W2 | RS-232 | |
| S1 | >1µm | |
| S2 | >2µm | |
| S3 | >2.5µm | |
| R1 | 1 relay output | |
| R2 | 2 relay output | |

ELECTRICAL CONNECTION

Supply and analog outputs connection

| Code | Red | Yellow | Black |
|------|------|--------|-------|
| I1 | +24V | signal | GND |
| V1 | +24V | signal | GND |

Communication connection

| Code | TX | RX |
|------|---------|---------|
| W1 | 485+(A) | 485-(B) |
| W2 | 232Tx | 232Rx |

Relay output connection

| Code | NC | COM | NO |
|---------|--------------|-------------|-------------|
| H-alarm | Normal close | Commonality | Normal open |
| L-alarm | Normal close | Commonality | Normal open |

COMMUNICATION SPECIFICATIONS

Protocol

Data Format: 1 start bit, 8 data bit and 2 end bit.

Protocol type: MODBUS RTU (Hex data)

| | | | | | | | |
|------|----|----|----|----|----|------|------|
| Addr | 03 | 00 | 00 | 00 | 01 | CRCH | CRCL |
|------|----|----|----|----|----|------|------|

Example: If Addr=1 then

Command:

| | | | | | | | |
|----|----|----|----|----|----|----|----|
| 01 | 03 | 00 | 00 | 00 | 01 | 31 | CA |
|----|----|----|----|----|----|----|----|

Response:

| | | | | | | |
|----|----|----|----|----|------|------|
| 01 | 03 | 02 | DH | DL | CRCH | CRCL |
|----|----|----|----|----|------|------|

Setting baud rate and communication address:

Please read the user manual of product.

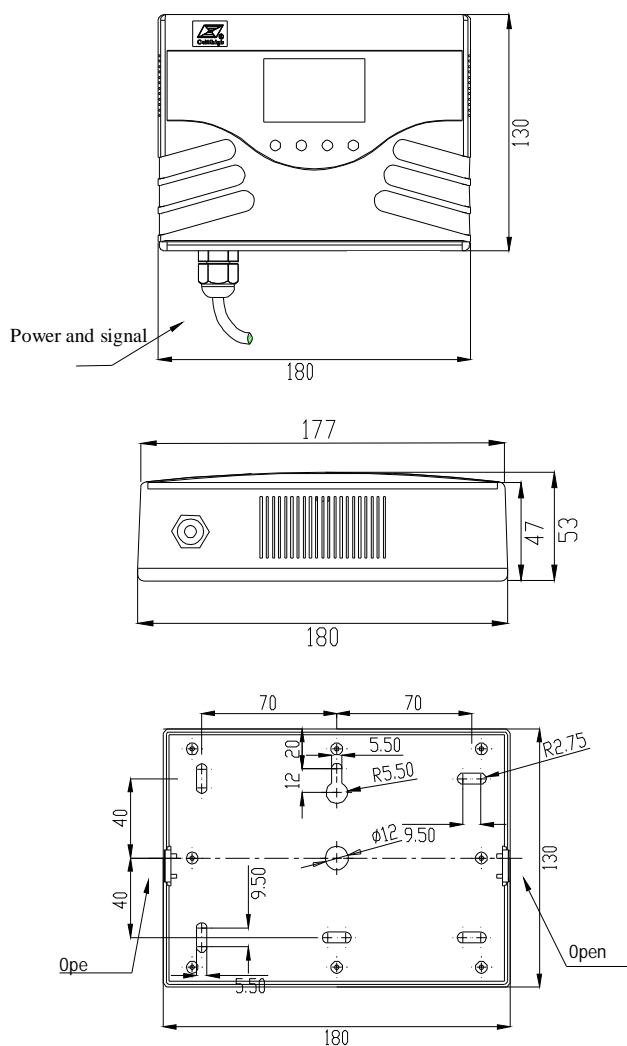
NOTES

| Level | Dust number (K/Liter) |
|--------|-----------------------|
| ISO7.1 | 0.1 |
| ISO7.5 | 0.3 |
| ISO8 | 0.7, 0.8, |
| ISO8.1 | 0.9~1.0 |
| ISO8.2 | 1.1~1.3 |
| ISO8.3 | 1.4~1.6 |
| ISO8.4 | 1.7~2.1 |
| ISO8.5 | 2.2~2.6 |
| ISO8.6 | 2.7~3.4 |
| ISO8.7 | 3.5~4.3 |
| ISO8.8 | 4.4~5.3 |
| ISO8.9 | 5.4~6.7 |
| ISO9 | 6.8~8.8 |

- The transmitter should be installed in a steady area, avoid from direct sunshine, kept away from windows, air conditioning and central heating system etc. And it should not be installed on the wall which opposite the window or door in the room.

- The transmitter must be preventing from the chemical agent, oil, dust and dew, ice condition. And you must avoid using the product in the condition that temperature acuity.

MOUNTING DIMENSION



Model JQAW-8

Wall Mount Smart CO2 Sensors



DESCRIPTION

The wall-mounted JQAW-8 series sensors are low profile, unobtrusive, and designed for installation in any office space or conference room. The transmitter controller includes a dual analog output (0-5V and 4-20mA), a mounting/wiring sub-base, and a Lifetime Calibration Guarantee. All JQAW-8 Series sensors offer a SPDT relay (normally open or closed) and can be custom programmed to a specific measurement and output range using the software interface or on-board keypad (display units).

PERFORMANCE SPECIFICATIONS

| | |
|-----------------------|--|
| Supply voltage | 24VDC (18-30V) |
| Power | Normally 50mA, maximal 100mA |
| Range | 0-2000ppm, 0-5000ppm, 0-10000ppm |
| Accuracy (25°C) | 40ppm+3%F·S |
| Output | Current: 4 to 20mA (Load < 500Ω) Voltage: 0-5V/10VDC (Load > 1KΩ) Communication: RS-485/RS-232 Relay: 2 (2A/30VDC, 0.4A/125VAC) |
| Response time | <1 min (0-90%RH) |
| Long-term stability | <1.0%/year |
| Operating environment | 0-50 °C , 5%RH~95%RH |
| Display dimension | 54mm x 45mm (128x64 dot LCD) |
| Mounting dimension | 180mm x 130mm x53mm (White Color ABS) |

FEATURES

- 0-2000ppm, 0-5000ppm and 0-10000ppm Range
- ±3.0% accuracy
- 128x64 dot LCD display with blue back
- wall-mounted installation easily
- 4-20mA, 0-5Vdc, RS-232/485 and relay outputs

ORDER CODES

| JQAW-8 | | |
|--------|------------------------------|----------------|
| I1 | Current 4ma to 20mA | |
| V1 | Voltage three-wire 0 - 5VDC | |
| V2 | Voltage three-wire 0 - 10VDC | |
| W1 | RS-485(max 127 nodes, 1.2km) | |
| W2 | RS-232 | |
| | S1 | 0~2000ppm |
| | S2 | 0~5000ppm |
| | S3 | 0~10000ppm |
| | R1 | 1 relay output |
| | R2 | 2 relay output |

ELECTRICAL CONNECTION

Supply and analog outputs connection

| Code | Red | Yellow | Black |
|------|------|--------|-------|
| I1 | +24V | Signal | GND |
| V1 | +24V | Signal | GND |

Communication connection

| Code | TX | RX |
|------|---------|---------|
| W1 | 485+(A) | 485-(B) |
| W2 | 232Tx | 232Rx |

Relay output connection

| Code | NC | COM | NO |
|---------|--------------|-------------|-------------|
| H-alarm | Normal close | Commonality | Normal open |
| L-alarm | Normal close | Commonality | Normal open |

COMMUNICATION SPECIFICATIONS

Protocol

Data Format: 1 start bit, 8 data bit and 2 end bit.

Protocol type: MODBUS RTU (Hex data)

| | | | | | | | |
|------|----|----|----|----|----|------|------|
| Addr | 03 | 00 | 00 | 00 | 01 | CRCH | CRCL |
|------|----|----|----|----|----|------|------|

Example: If Addr=1 then

Command:

| | | | | | | | |
|----|----|----|----|----|----|----|----|
| 01 | 03 | 00 | 00 | 00 | 01 | 31 | CA |
|----|----|----|----|----|----|----|----|

Response:

| | | | | | | |
|----|----|----|----|----|------|------|
| 01 | 03 | 02 | DH | DL | CRCH | CRCL |
|----|----|----|----|----|------|------|

Setting baud rate and communication address:

Please read the user manual of product.

NOTES

- The transmitter should be installed in a steady area , avoid from direct sunshine, kept away from windows, air conditioning and central heating system etc. And it should not be installed on the wall which opposite the window or door in the room.
- The transmitter must be preventing from the chemical agent, oil, dust and dew, ice condition. And you must avoid using the product in the condition that temperature acuity.

MOUNTING DIMENSION

